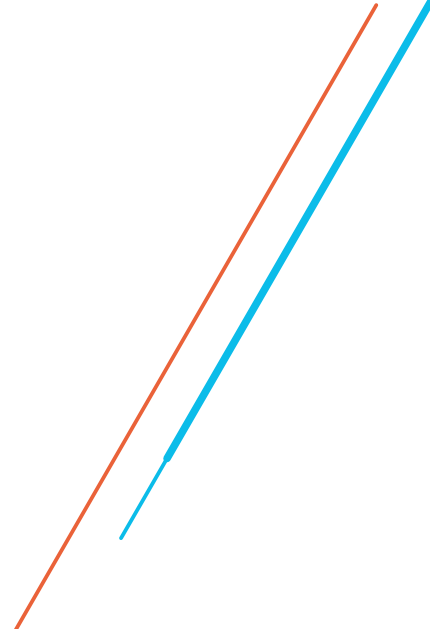




**WOVEN  
VINYL  
FLOORING**







**Vibrant Floors** offers wide range of luxury woven vinyl flooring. Our flooring offers the texture and warmth of a woven, natural fibre with the practicality of a robust contract flooring. Our goal is to provide innovation into today's commercial and residential floorings proposition with a new generation type of flooring. The innovative woven vinyl and fiber glass flooring with quality polyvinyl chloride base, which makes product remarkably robust, very functional and elegant.

Luxury Woven Vinyl is favorite selection amongst esteemed architects, interior designers and contractors worldwide for multiple application areas for indoors.



## APPLICATION AREAS



Office & Corporate



Bank



Medical Practice



School



Hospitality



Shops



Residential



Gym



Public Area

textile  
COLLECTION



Textiles 1



Textiles 2



ethnic  
COLLECTION



Ethnic Black



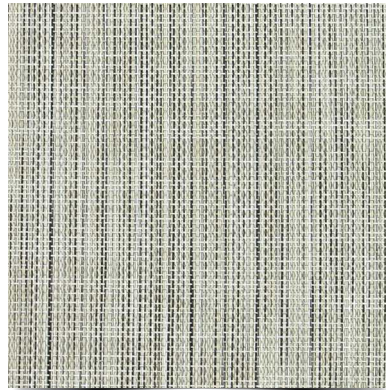
Ethnic Cream



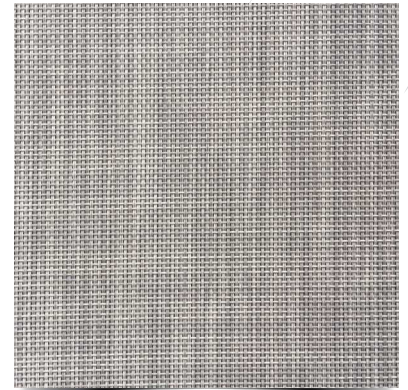
nature  
COLLECTION



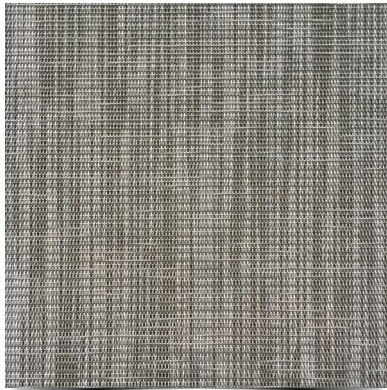
Natural Soul



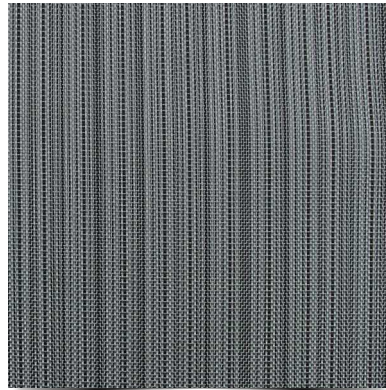
Natural Mist



Natural Black



Natural Flow



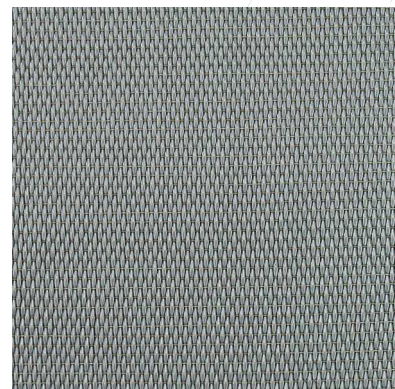
Natural Coral



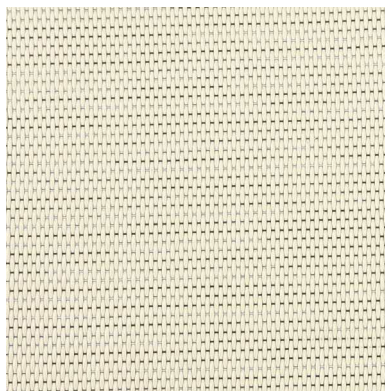
**solid**  
COLLECTION



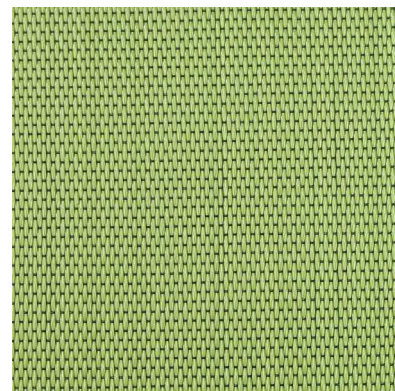
Solid Grey



Solid Beige



Solid Green

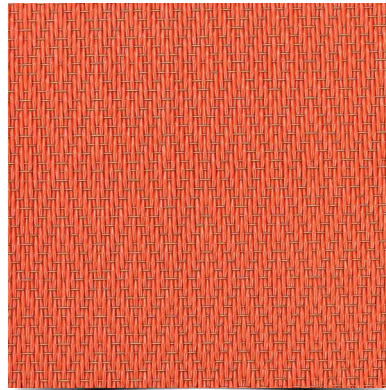




woven  
COLLECTION



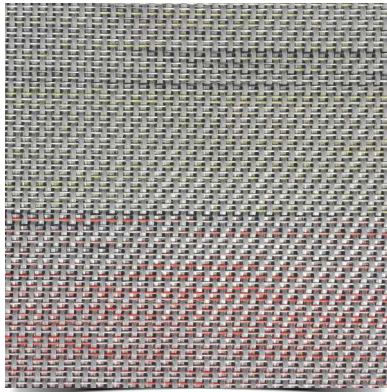
Woven Saffron



Woven Gold



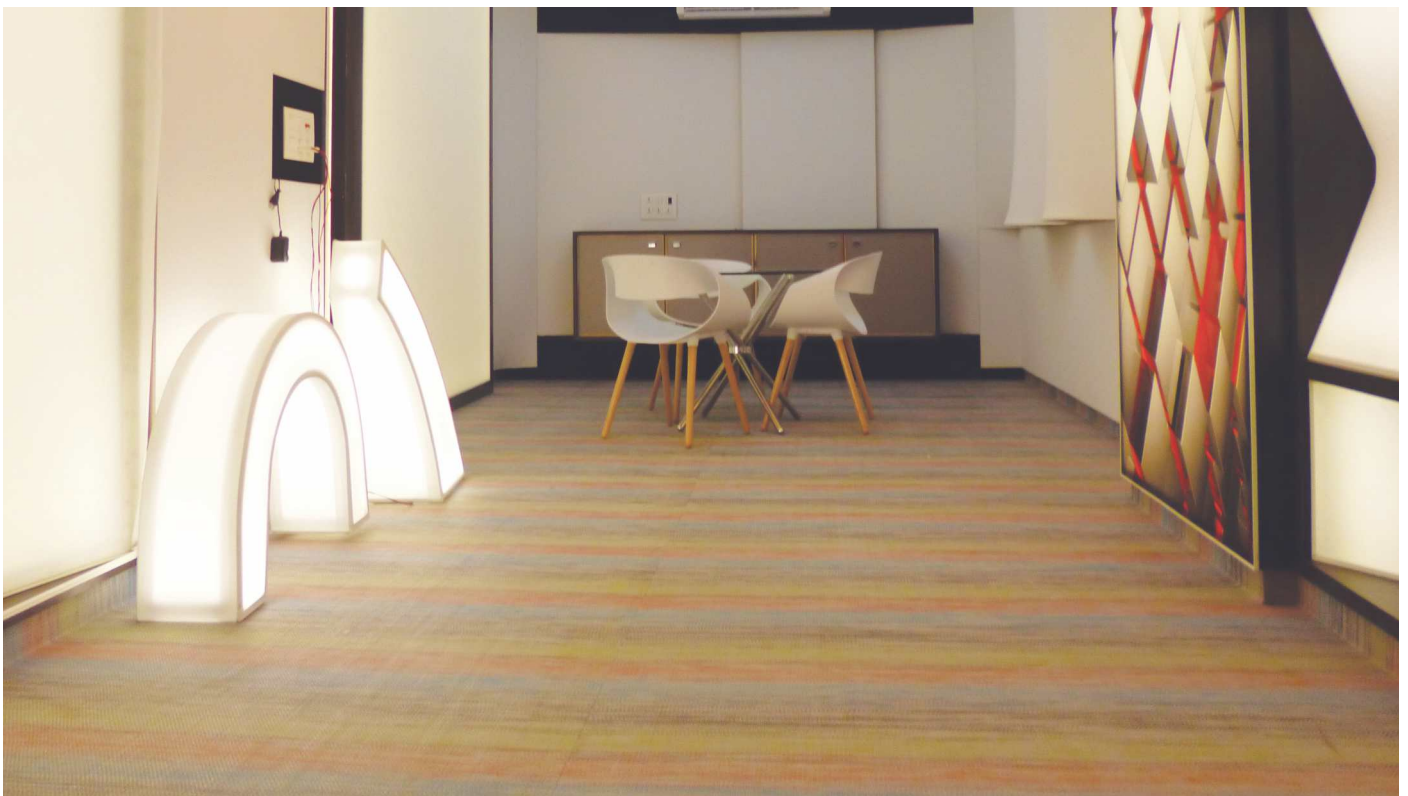
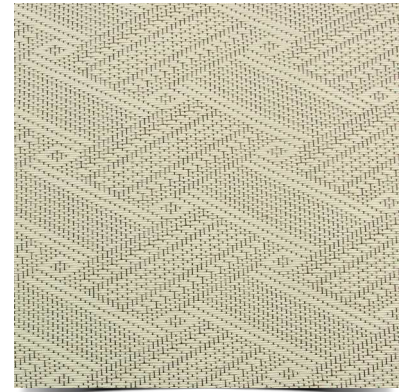
Woven Metallic



Woven Khakhi



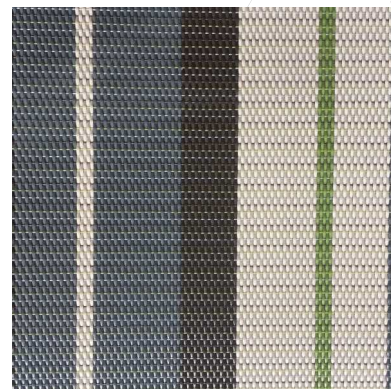
Woven Cream



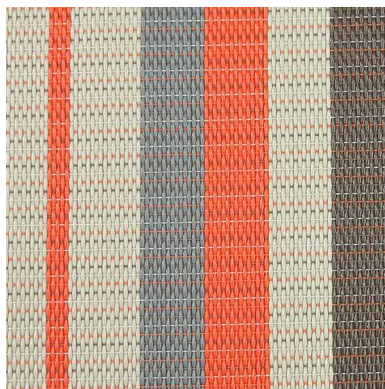
fantasy  
COLLECTION



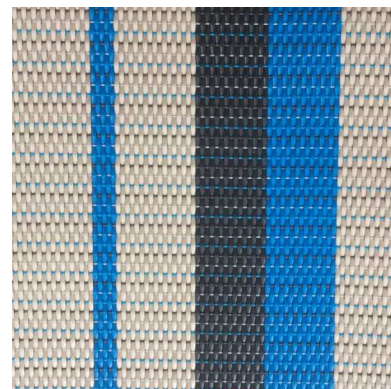
Fantasy Royal



Fantasy Orange



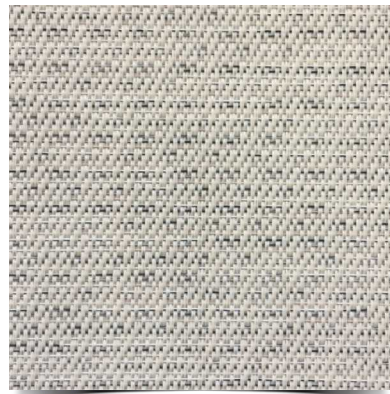
Fantasy Club



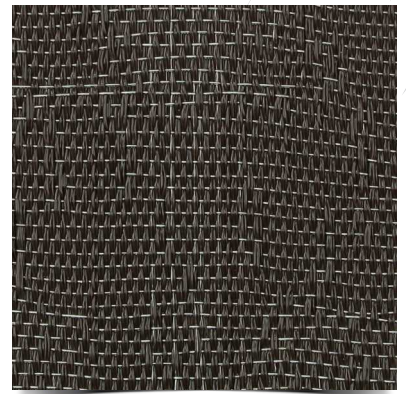
graphic  
COLLECTION



Graphic Ivory



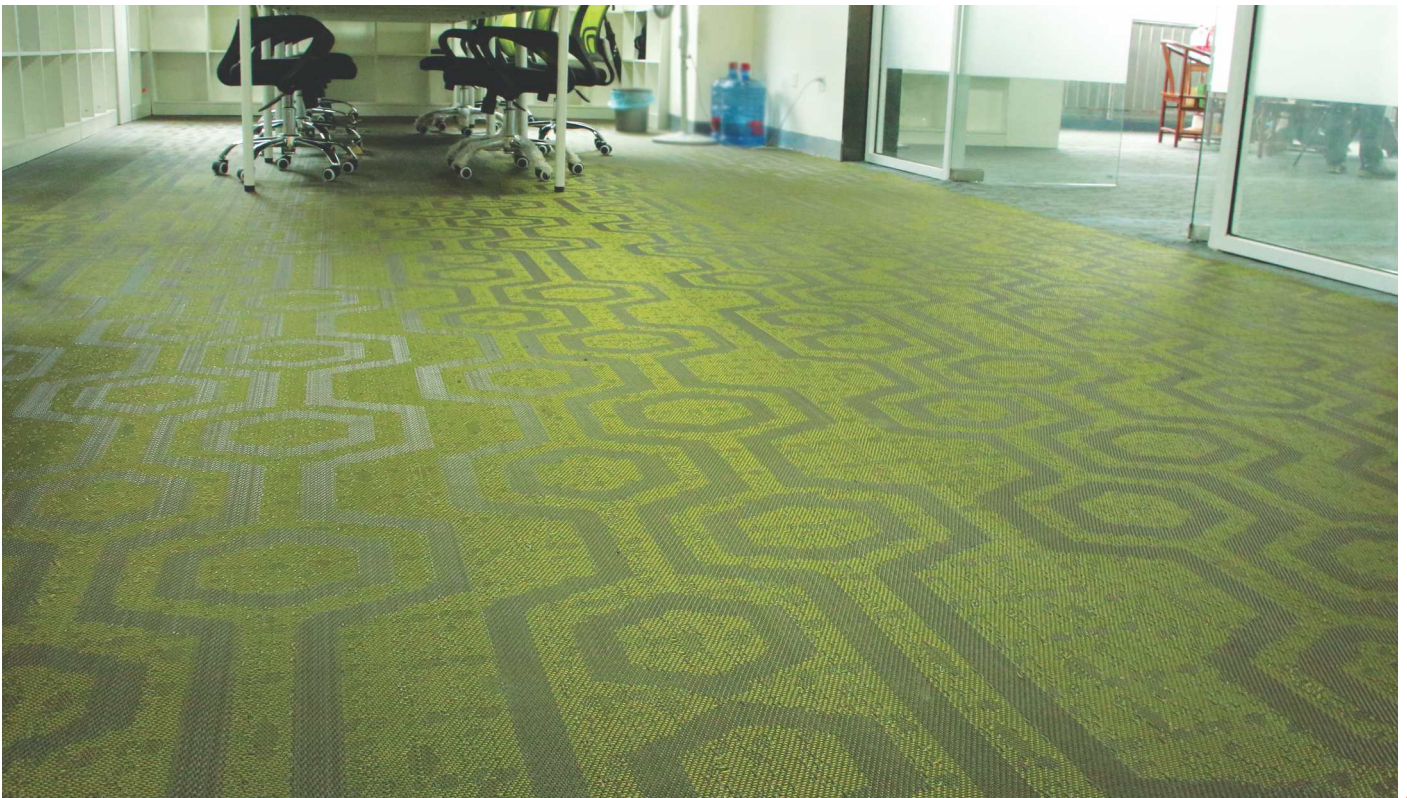
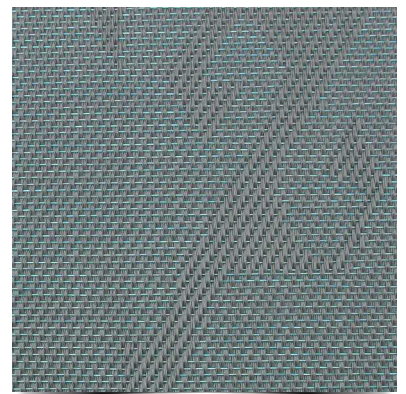
Graphic Brown



Graphic Green

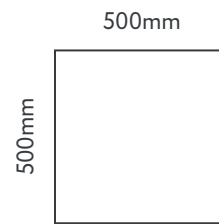


Graphic Grey

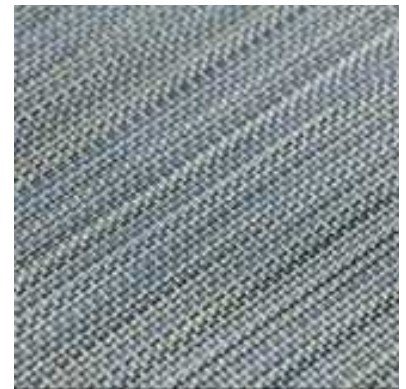


# tiles

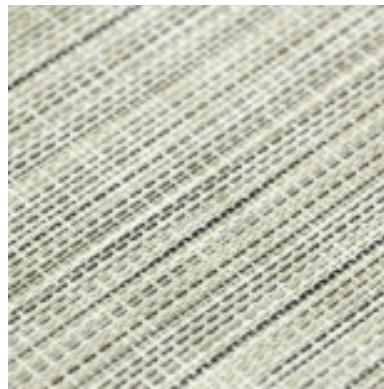
COLLECTION



MT - Urban



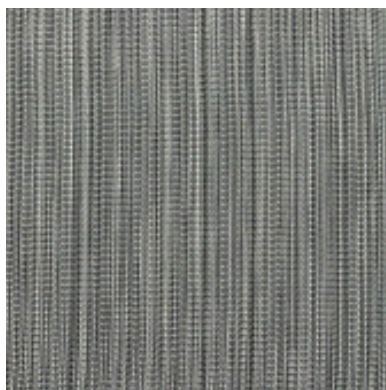
MT - Soul



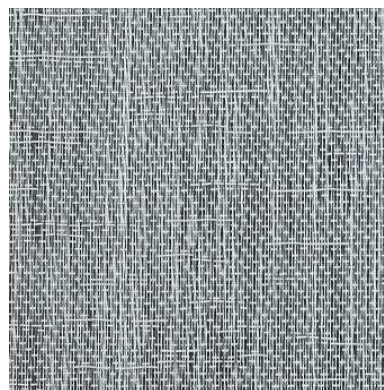
MT - Pacific



MT - New England

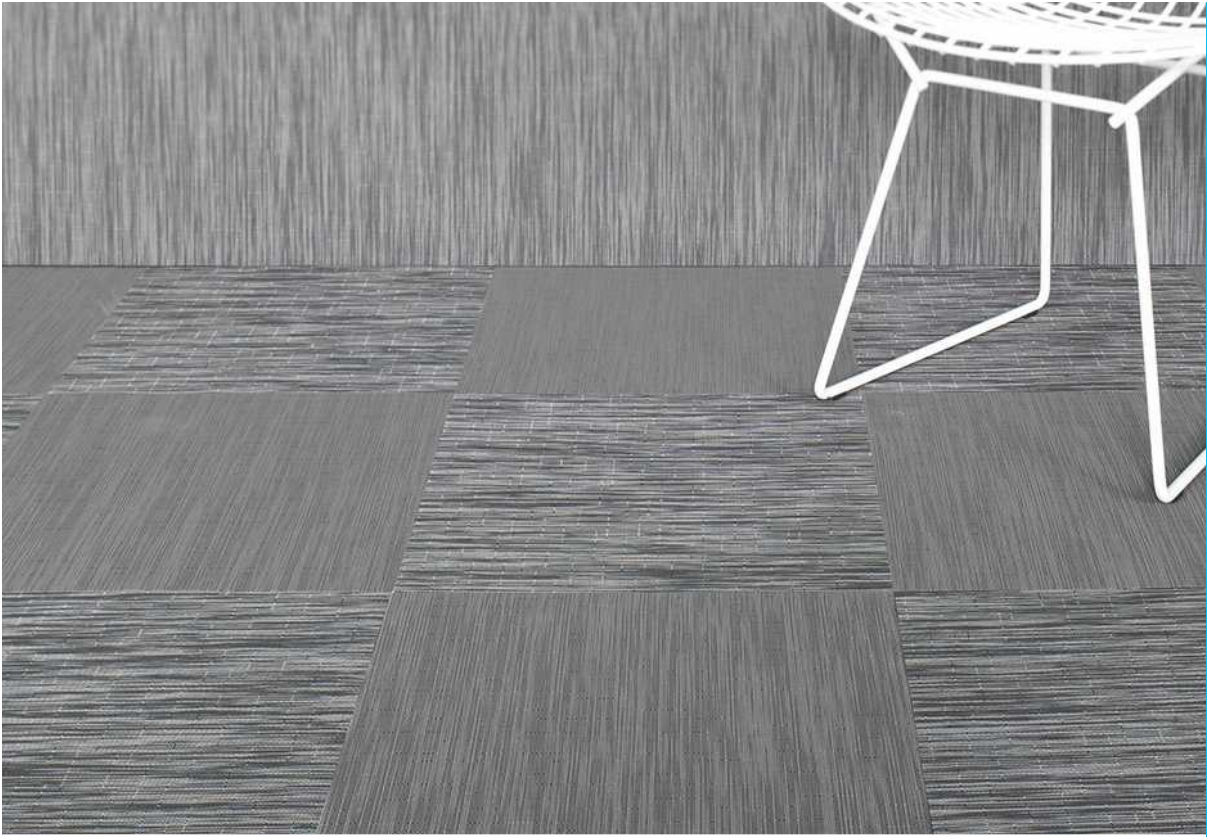


MT- New York



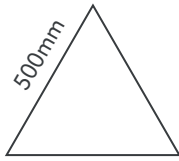
MT- Storm



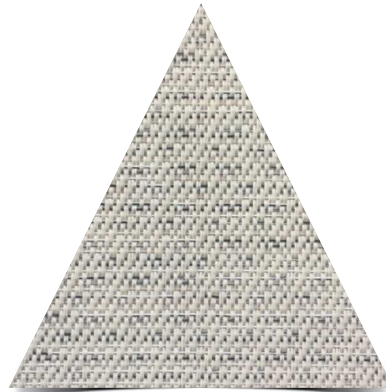


# triangle

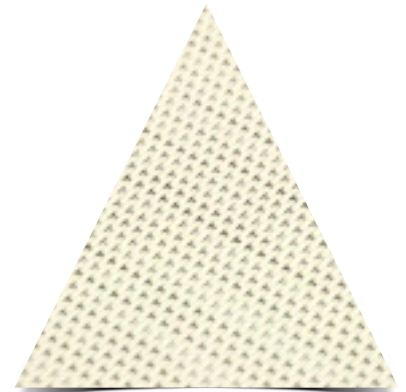
COLLECTION



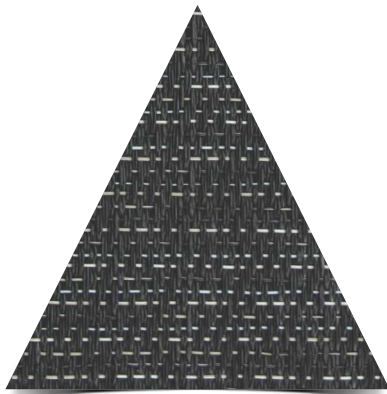
T- Texture Beige



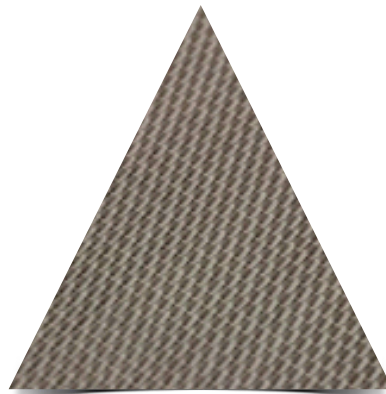
T- Beige



T- Texture Brown



T- Coffee



T- Green



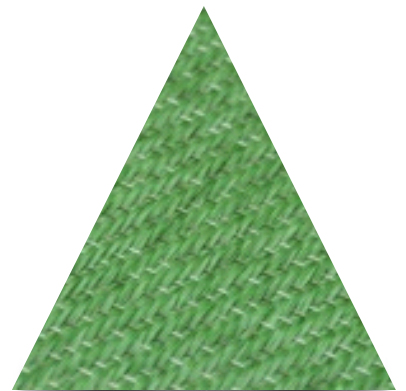
T- Charcol



T- Fern



T- Deep Green



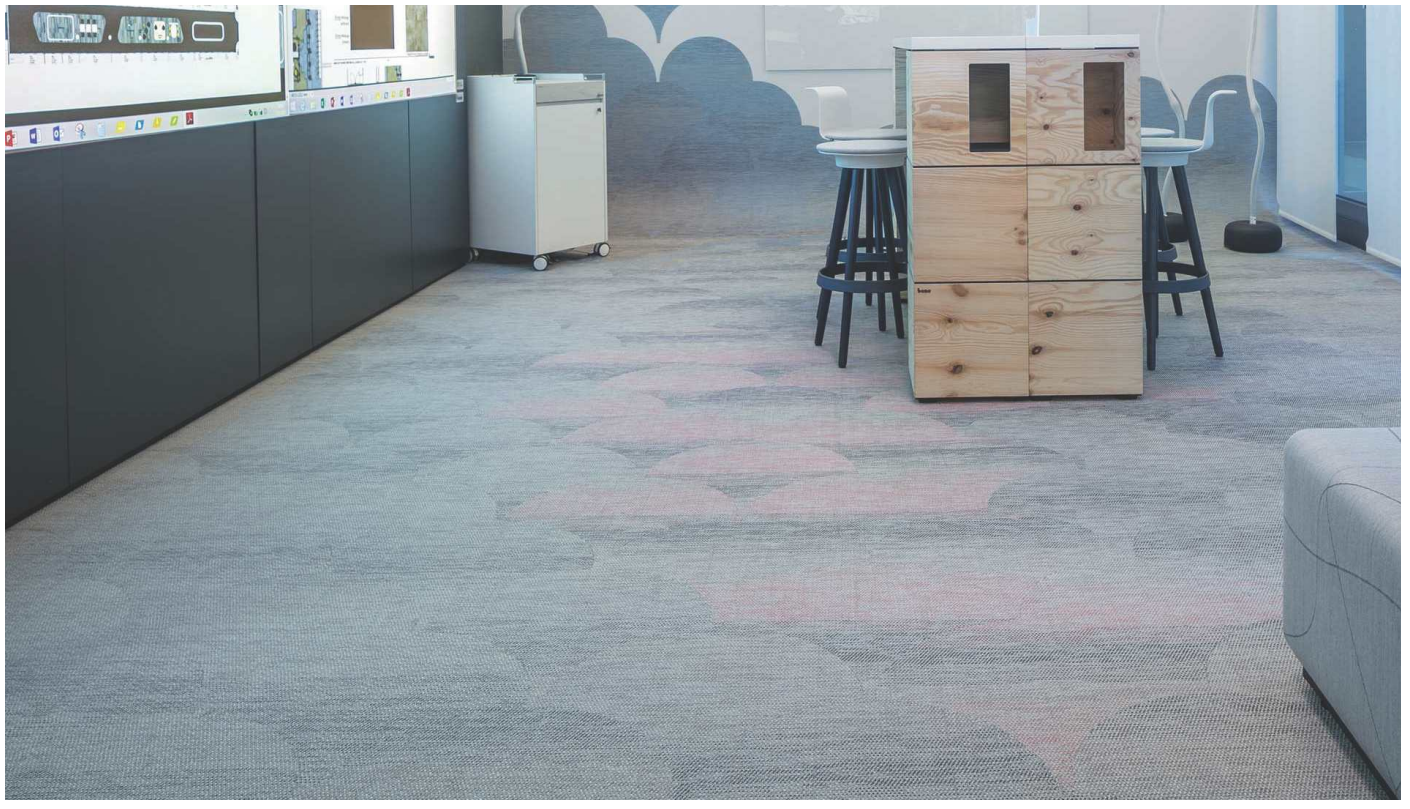
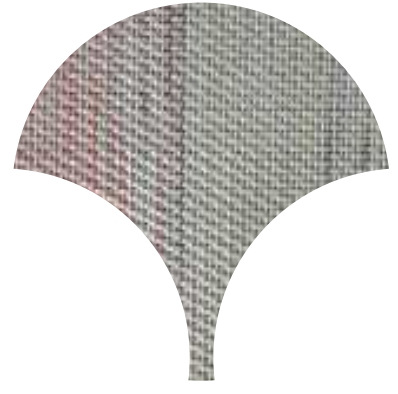
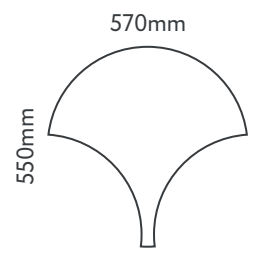


# scale

COLLECTION



## Scale - Metallic



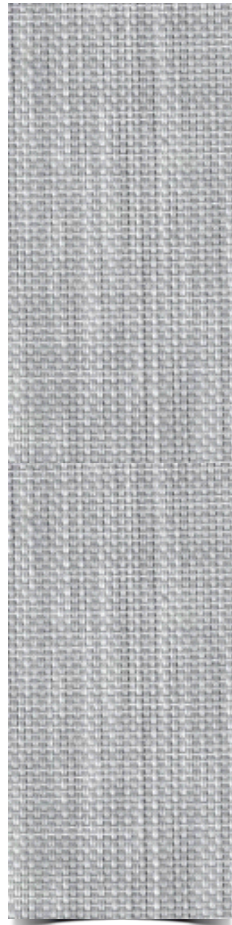


# plank

COLLECTION



P - Mist



P - Deep



P - Dusk



# installation

## REQUIREMENTS

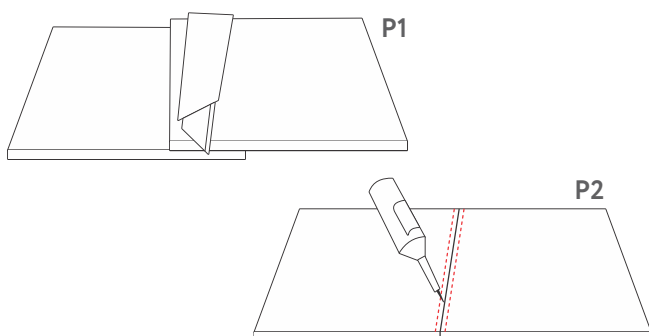
1. The Vibrant Woven Vinyl Flooring is better to be installed by a professional installer.
2. The sub-flooring should be clean, dry and without cracks.
3. The best installation temperature must be higher than 15 centi-degree and the relative humidity not higher than 80%. A room temperature between 18°C (65°F) and 25°C (77°F).

## PREPARATIONS

1. Cutting tools: Shovel/Safety knife/Cutting knife/Trowel
2. Cleaning tools: Vacuum/Mop cloth/Shoe cover/Mop/Broom
3. Glue: PVC glue/Cold welding liquid
4. Other tools: Sand/Heavy roller/Carpenter's ink market/floor rule/Scotch tape

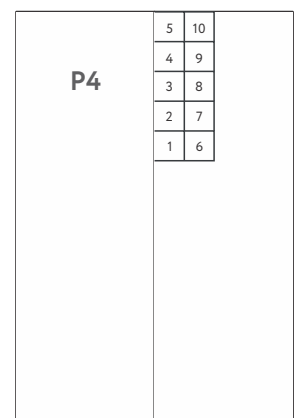
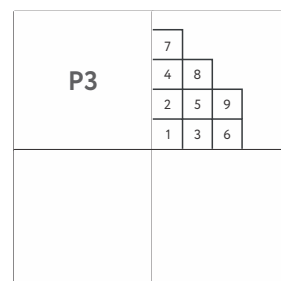
## INSTRUCTIONS (ROLLS)

1. Apply self levelling compound, 24 hours prior to installation. This compound is then grinded and vacuum cleaned. Take heed, depending on the construction of the floor, of the allowed residual humidity and possible rising moisture.
2. Roll the floor covering out, overlapping for about 5 cm and leave 24 hours to acclimatize. As P1
3. Fold the back over half of their length (or width) draw a mark as start for the PVC glue application. Lay the Vibrant Woven Vinyl Flooring on the wet glue and use the heavy roller to remove all air bubbles.
4. Use the cold welding liquid to weld the seams, prior to that put the scotch tape on the carpet, cut the tape using the seam. Then fit the seam by cold welding liquid. As P2
5. After few minutes, check the result.



## INSTRUCTIONS (TILES)

1. Apply self levelling compound, 24 hours prior to installation. This compound is then grinded and vacuum cleaned. Take heed, depending on the construction of the floor, of the allowed residual humidity and possible rising moisture.
2. Leave the tiles 24 hours to acclimatize.
3. Measure the center of room and mark a line for the PVC glue application. Lay the Vibrant Woven Vinyl Tiles on the wet glue and use the heavy roller to remove all air bubbles. As P3 / P4
4. After few minutes, check the result.



# care & maintenance

## VIBRANT WOVEN VINYL FLOORING CARE AND MAINTENANCE

There should always be a well-functioning entrance system to ensure the majority of the dirt stays there. 85% of the dirt comes from the outside.

### MECHANICAL CLEANING

1. Vacuum clean the flooring.
2. Clean the flooring with a scrubber-dryer machine with "soft" brush rollers. Use warm to the touch water with the minimum dose of all-purpose cleaner (PH7-8.5), to avoid having to rinse the flooring afterwards. It is an advantage to drive in the carpet's longitudinal direction.

### MANUAL CLEANING
















1. Vacuum clean the flooring.
2. Use a scrubbing brush on a shaft. Dip the scrubbing brush in a bucket with warm to the touch water/all-purpose cleaner solution, PH 7-8.5, and scrub the floor.
3. Suck up the water with a wet vacuum cleaner, or dry the floor with soft cloth/micro-fibre cloth.

### STAIN REMOVAL

Stains should be removed as soon as possible. When using a stain remover, check with the manufacturer that should not damage vinyl flooring. Use a scrubbing brush and always rinse with water.

Special : For chewing gum use - 1. Icy-spray, 2. Spot Eliminator



TECHNICAL INFORMATION			ROLLS	TILES
Classification		EN 685	33	33
Weight		ISO 8543	2.7-3.1kg/m <sup>2</sup>	3.3-5kg/m <sup>2</sup>
Thickness		ISO 1765	2.5mm-2.8mm	2.5mm-2.8mm
Roll Length		EN 426	20-25m	-
Roll Width		EN 426	1.8m	-
Tile Dimension		EN 994	-	50x50cm
Dimension Stability		ISO 2551	< 0.25%	< 0.25%
Curvature		EN 434	< 2mm	< 2mm
Caster Chair		EN 985	Continuous use	Continuous use
Body Voltage		ISO 1815	≤ 2.0KV	≤ 2.0KV
Thermal Resistance		ISO 8302	Suitable for underfloor heating	Suitable for underfloor heating
Colour Fastness to Light		ISO 105-B02	> 6	> 6
Anti-slip property		EN 13893	> 0.3	> 0.3
Reaction to Fire		EN13501-1	Bfl-s1	Bfl-s1
Smoke Density		ASTM E662	< 450	< 450
REACH Test		1907/2006	NO.(6614)008-1228-R2	
CE Certification		EN14041 EN15114	NO. EC. 1282.OA140305.AYD0738	
ISO 9001 Certification		ISO 9001:2008	NO. 04514Q20096R0S	
ISO 14001 Certification		ISO 14001:2004	NO. 04514E20029R0S	



Sound  
Absorbent



Anti-bacterial



Unique &  
Limitless  
Designs



Stain,  
Water & Oil  
Resistant



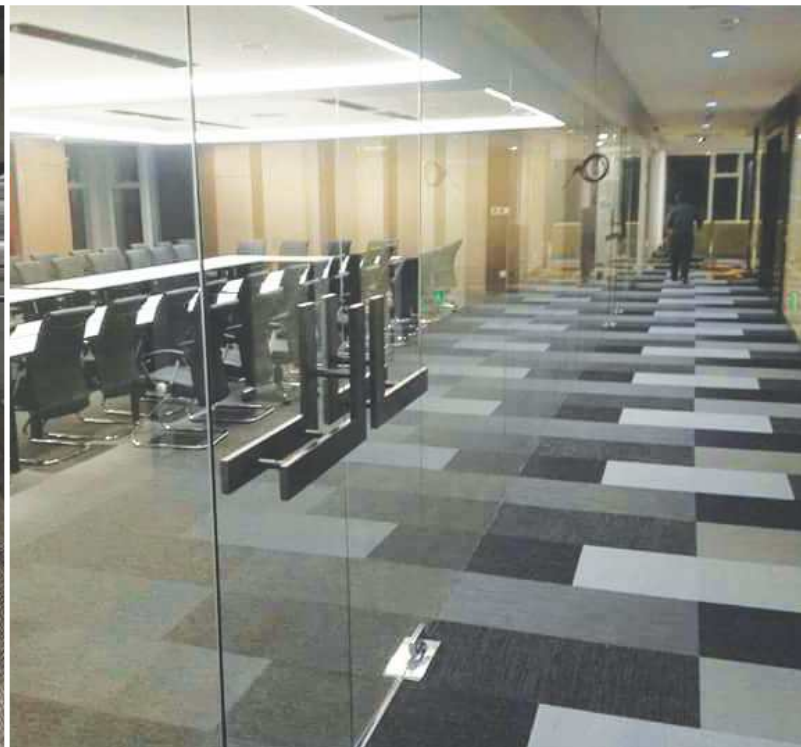
Easy  
Installation



Hygienic

# our esteemed clients

	MARKS & SPENCER	N E X A	
	SYBASE®		GlobalLogic®
	 MAHIMA GROUP Committed to Excellence		
		 ANAND INCUBATION CENTER ignite   incubate   accelerate	
 opportunities infinTe			and many more...
	 DORMAK Exploring Ideas		







**VIBRANT FLOORS PRIVATE LIMITED**

A-76, 2nd Floor, DDA Shed, Okhla Industrial Area, Phase-2, New Delhi - 110020

☎ 011-65451110 | 011-49043159

✉ [info@vibrantfloors.in](mailto:info@vibrantfloors.in) 🌐 [www.vibrantfloors.in](http://www.vibrantfloors.in)

---

NEW DELHI · MUMBAI · BENGALURU · CHENNAI · HYDERABAD · AHMEDABAD  
KOLKATA · SURAT · PUNE · JAIPUR · LUCKNOW · LUDHIANA